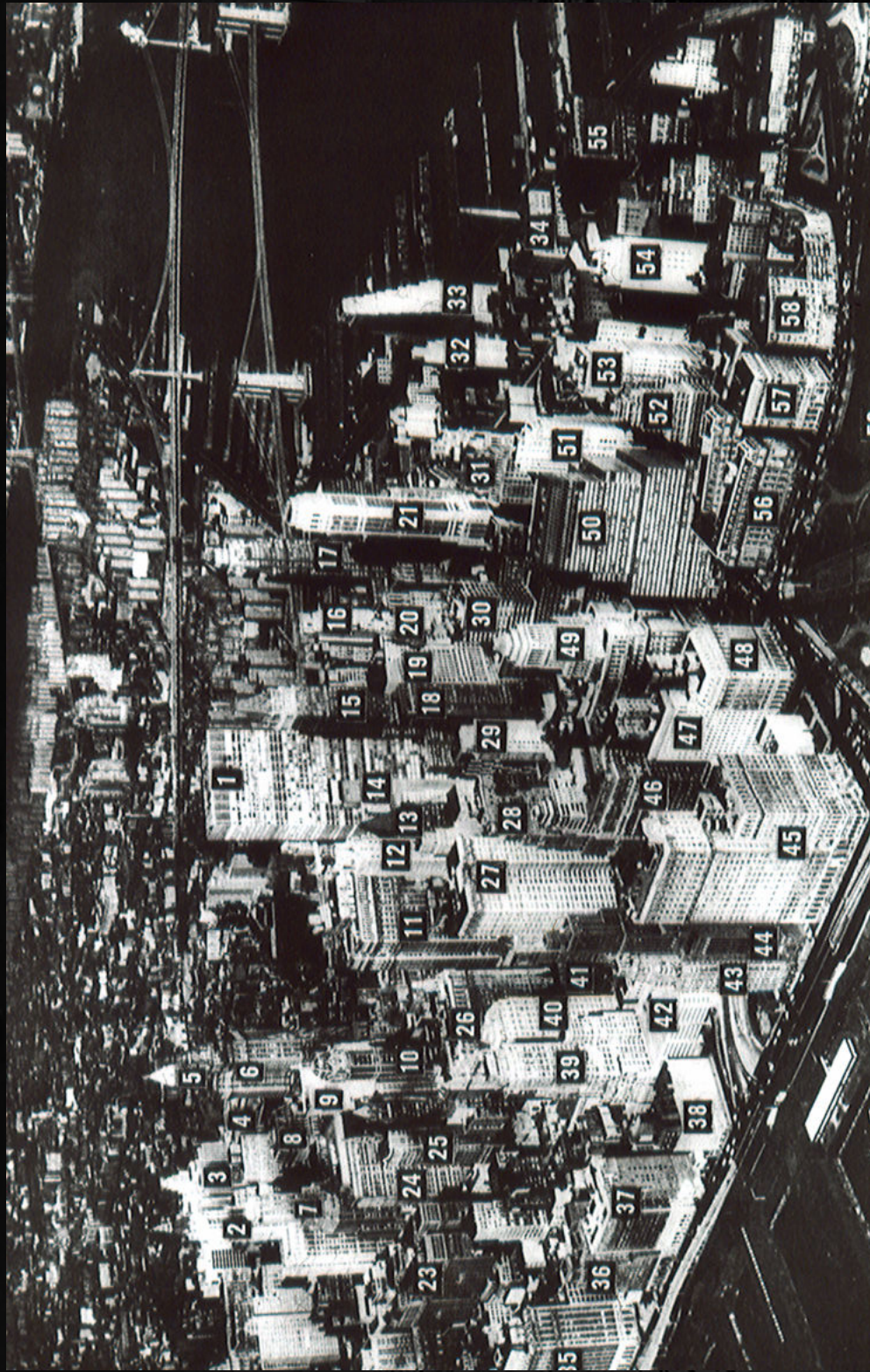
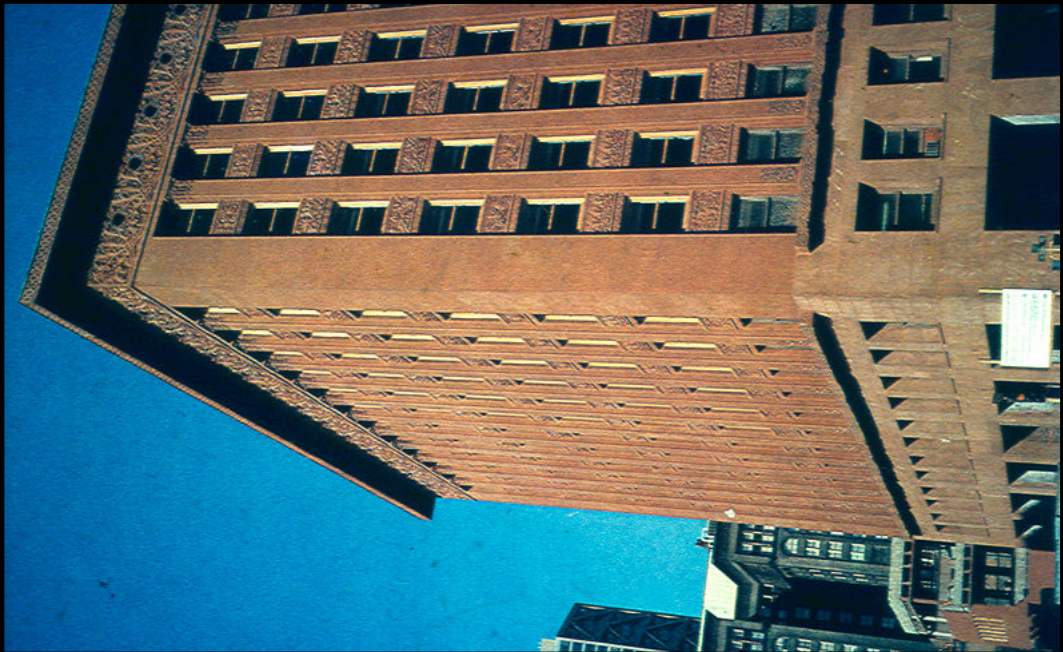
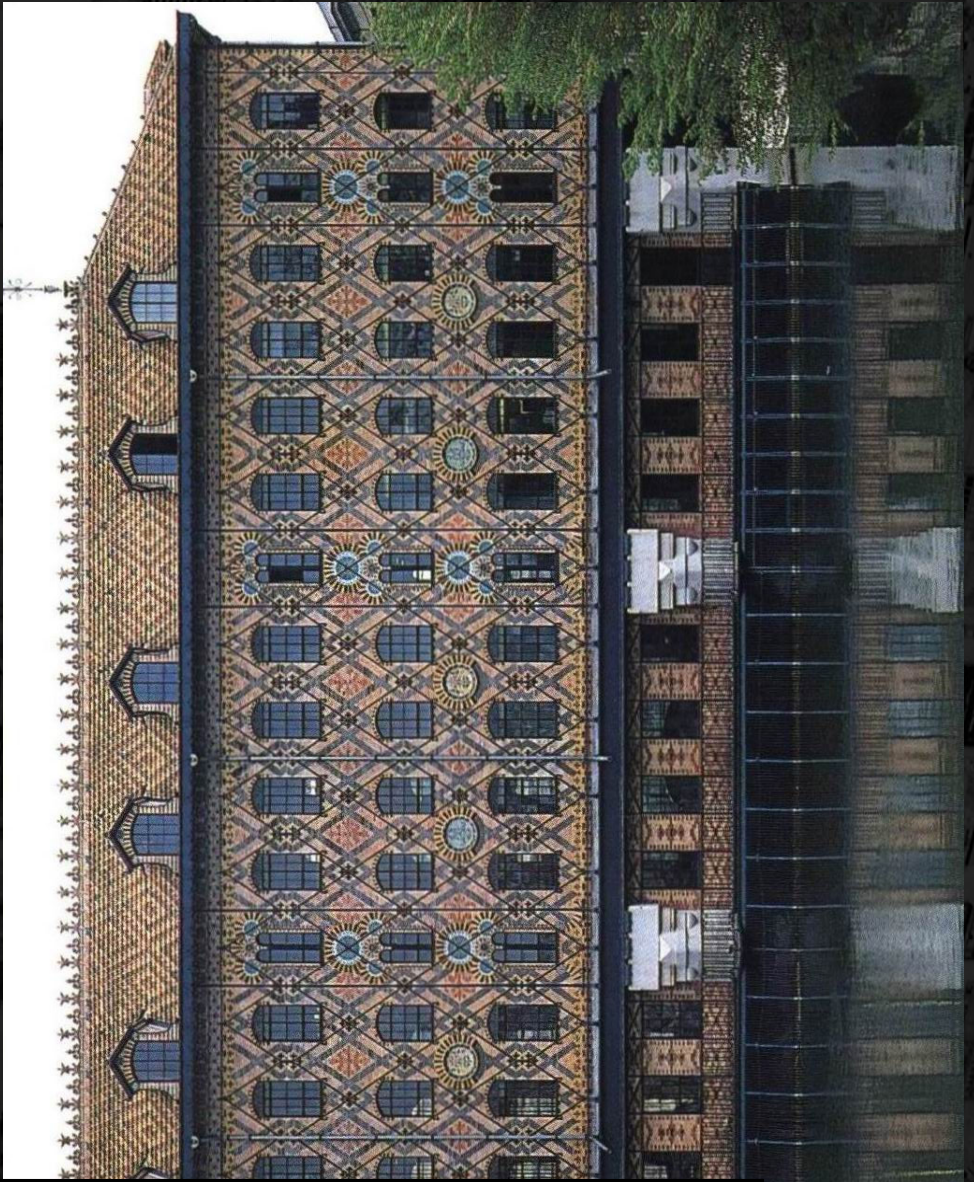




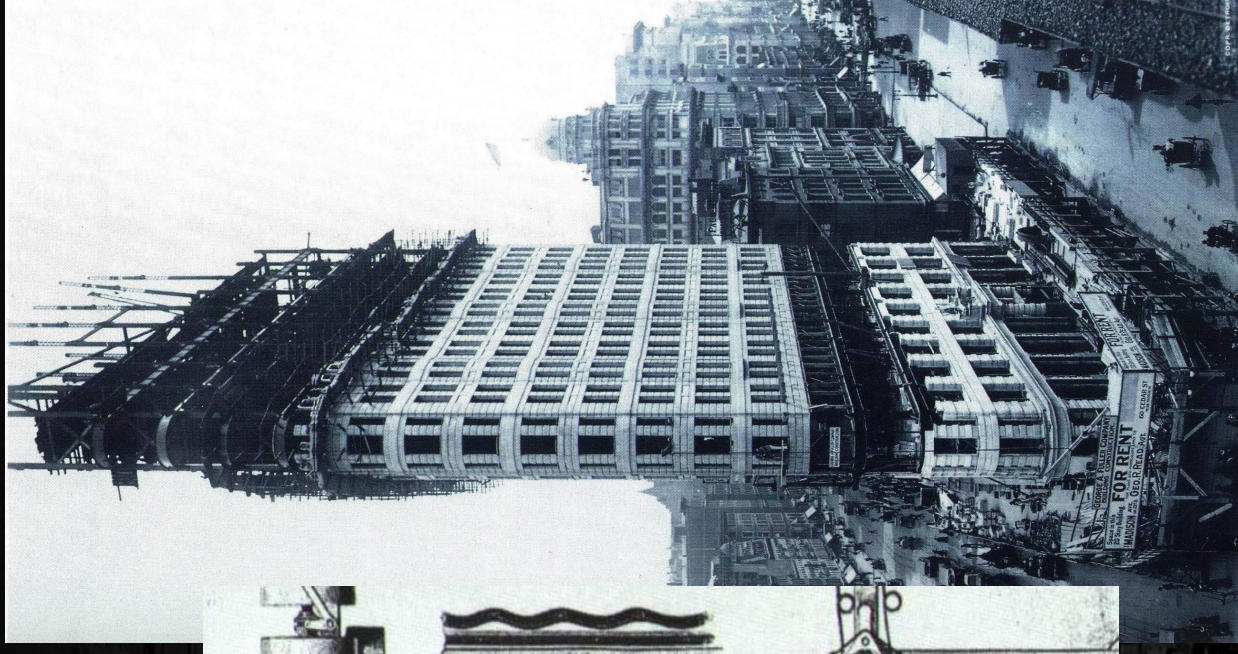
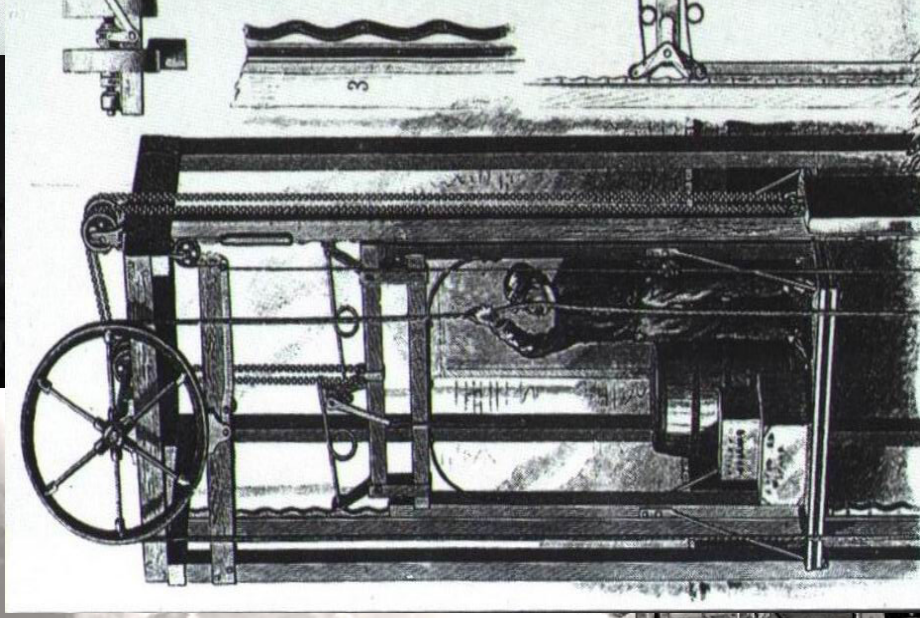
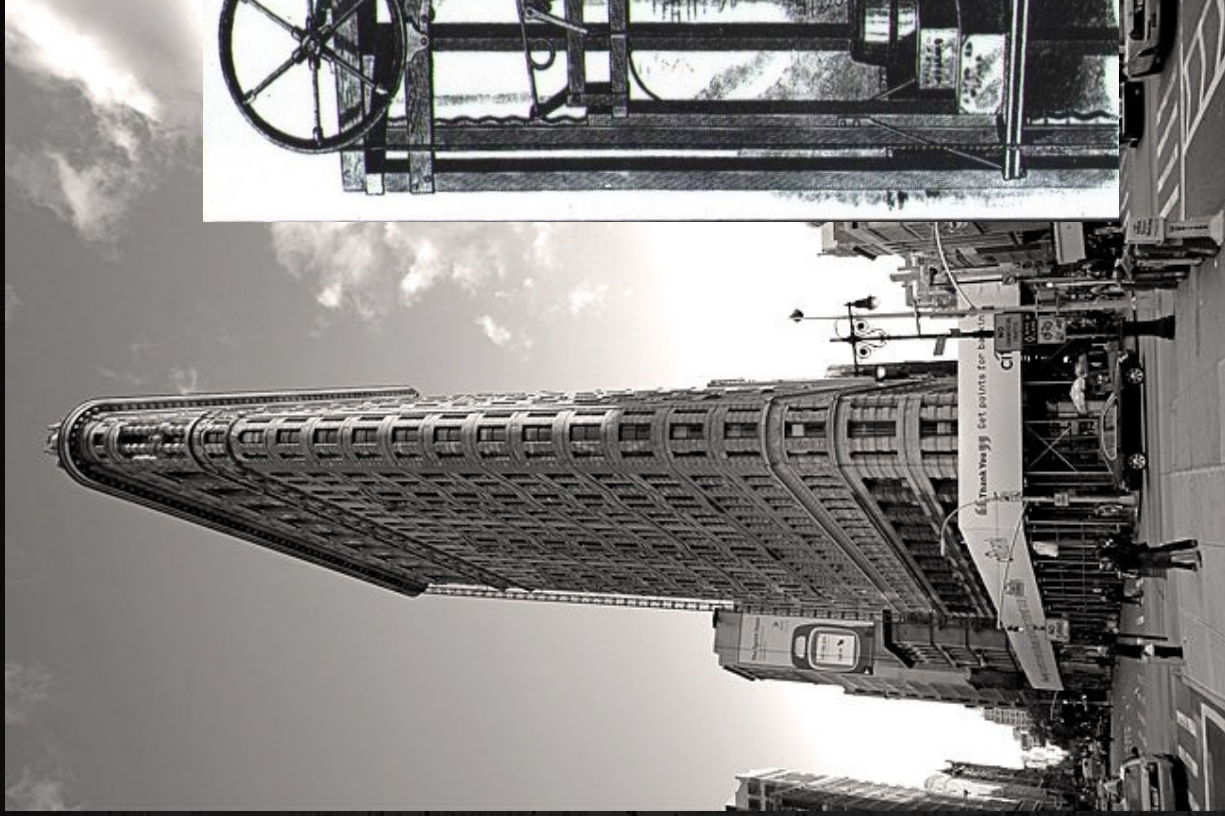
Magasházak

Különlleges Tartószerkezetek



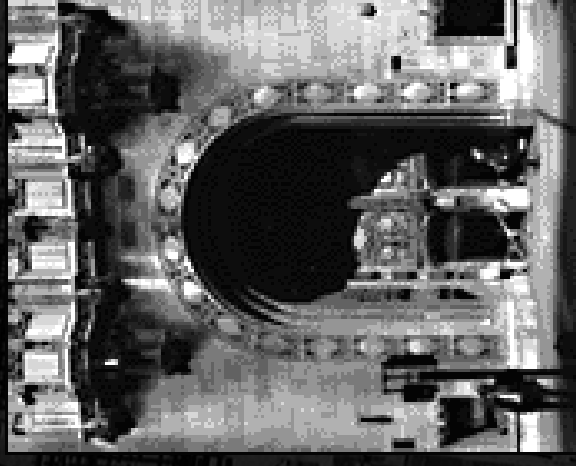
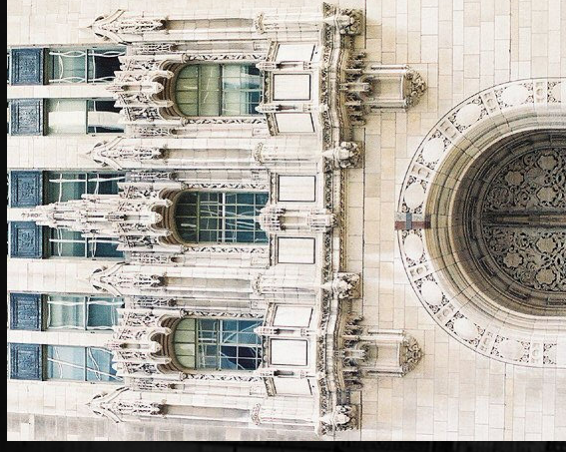


Flatiron Building (1902, 87m)

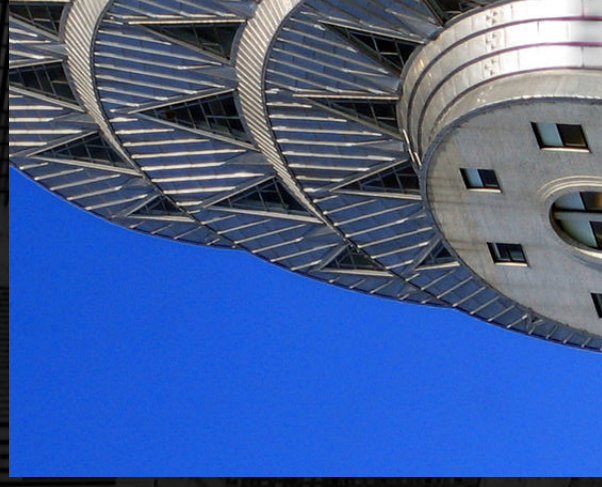




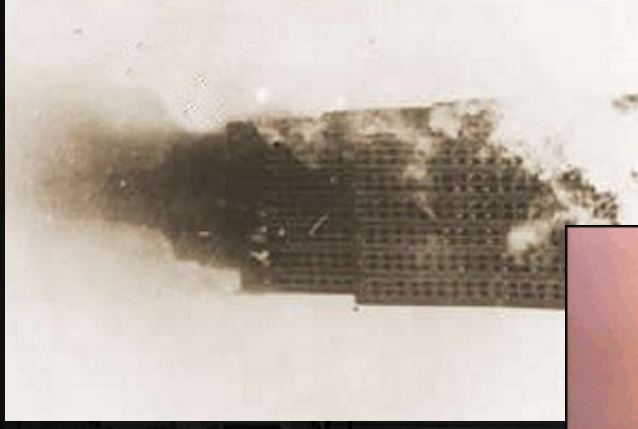
Tribune Tower (1925, 141m)



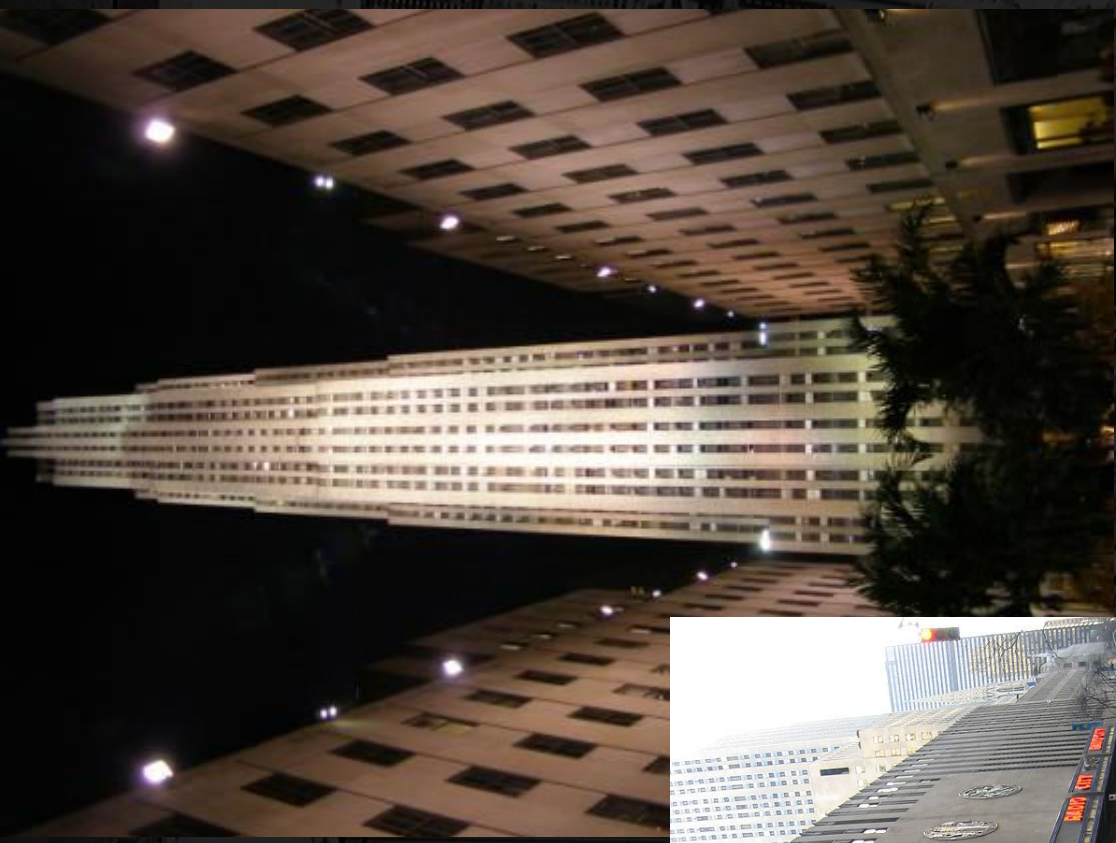
Chrysler Building (1930, 319m)



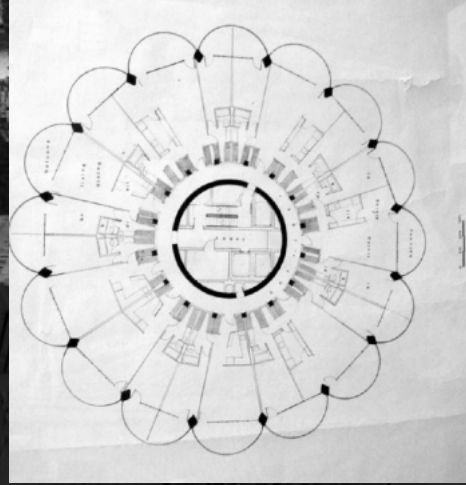
Empire State Building (1931, 381m)



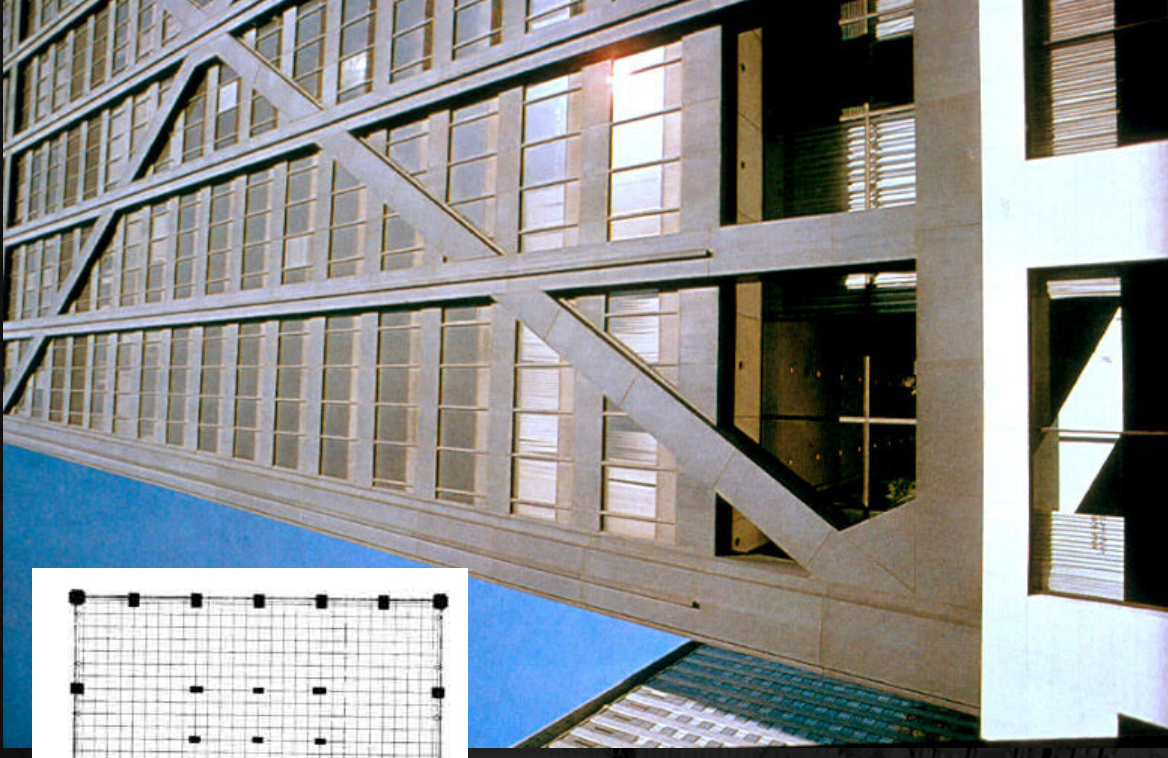
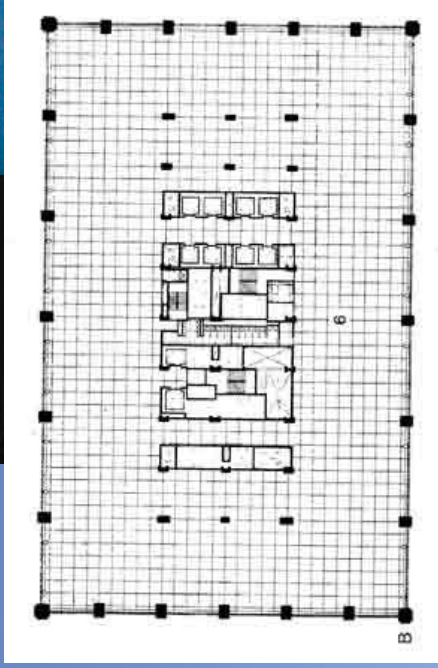
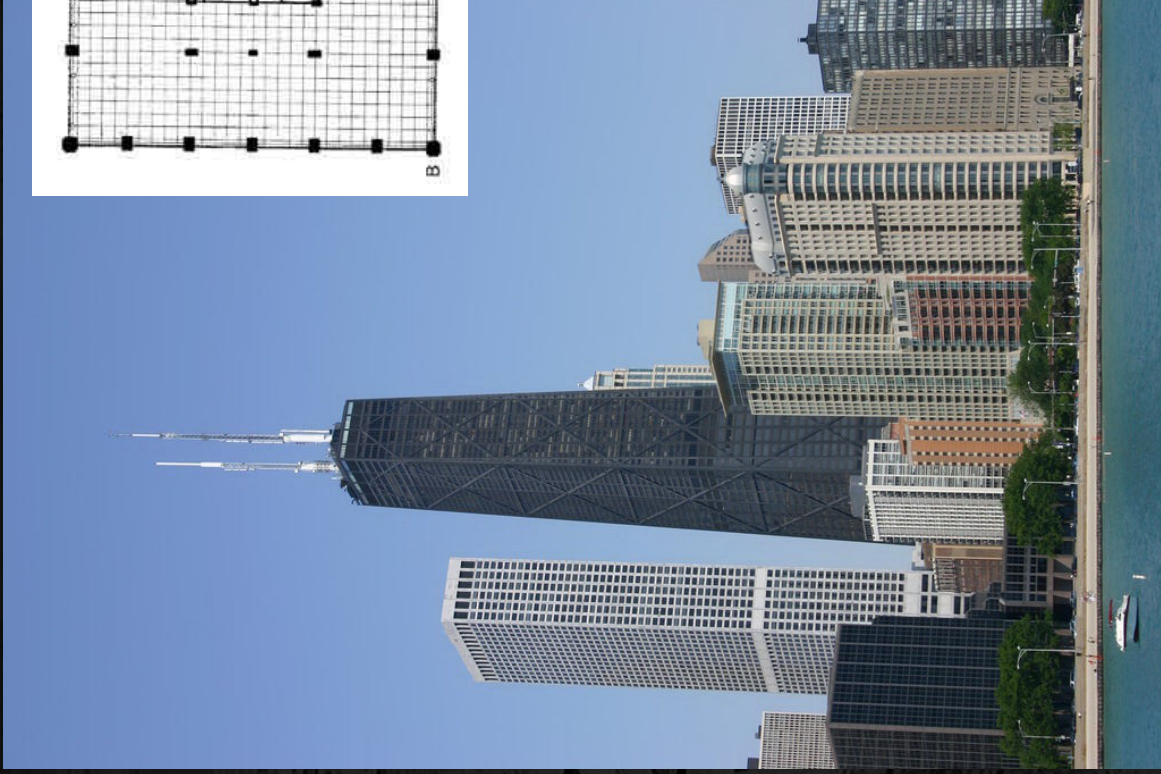
Rockefeller Center (1940, 259m)



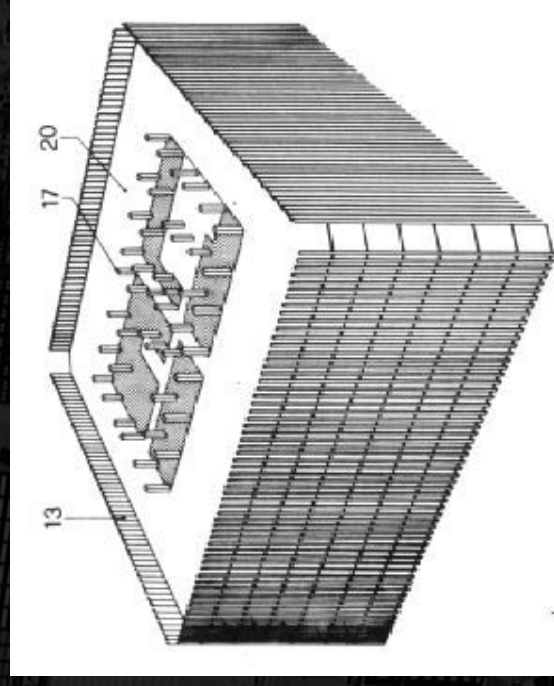
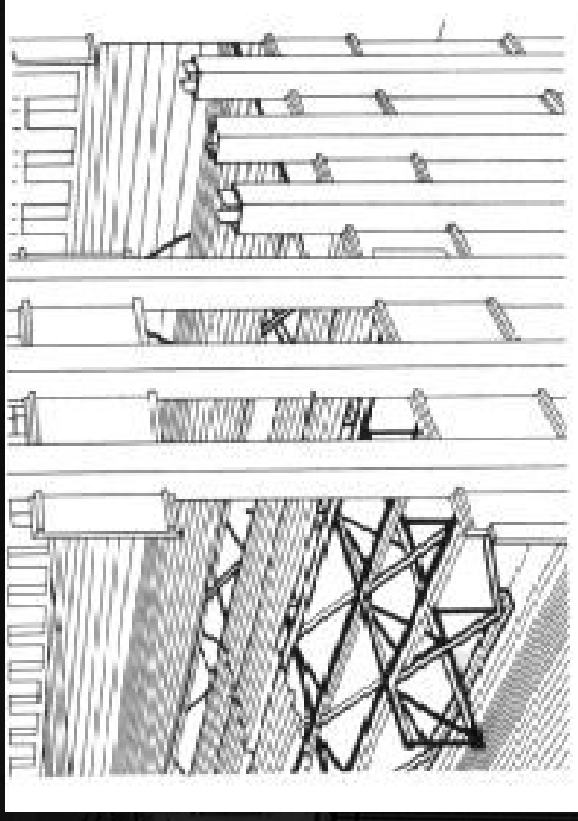
Marina City (1962, 179m)



John Hancock Center (1969, 344m)

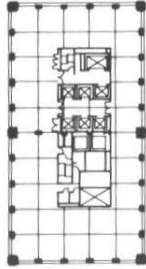


World Trade Center (1972, 410m)

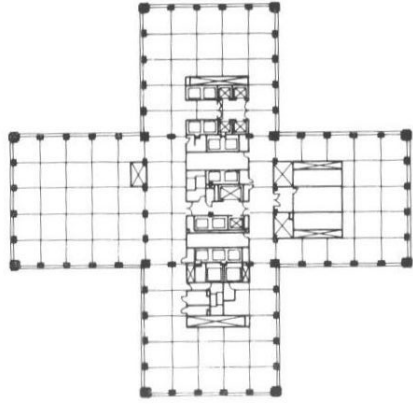


Sears Tower (1974, 442m)

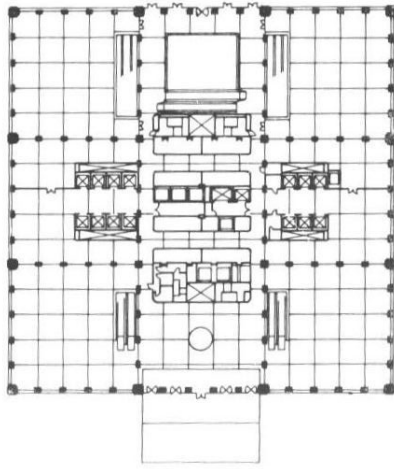
SEARS TOWER, CHICAGO, ILLINOIS, 1974.



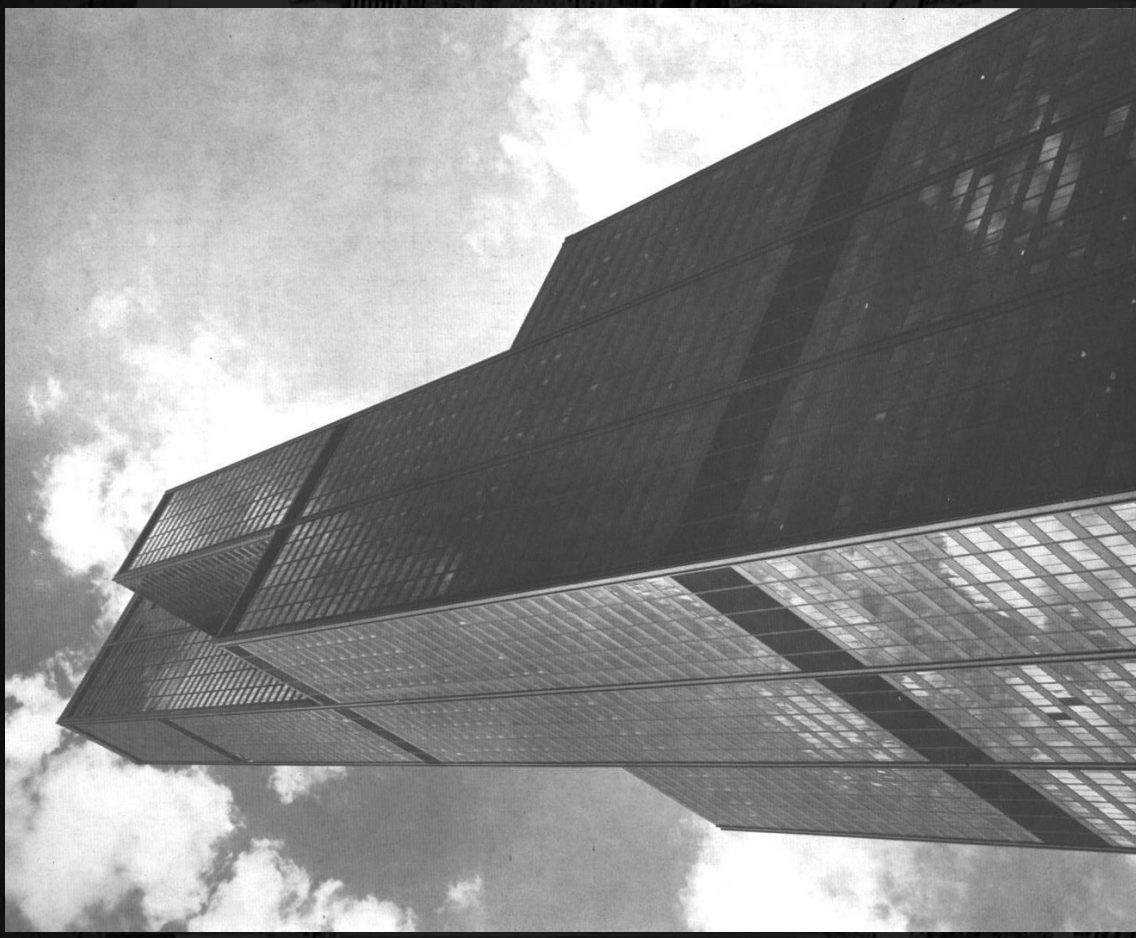
46. A felső szintek alaprajza



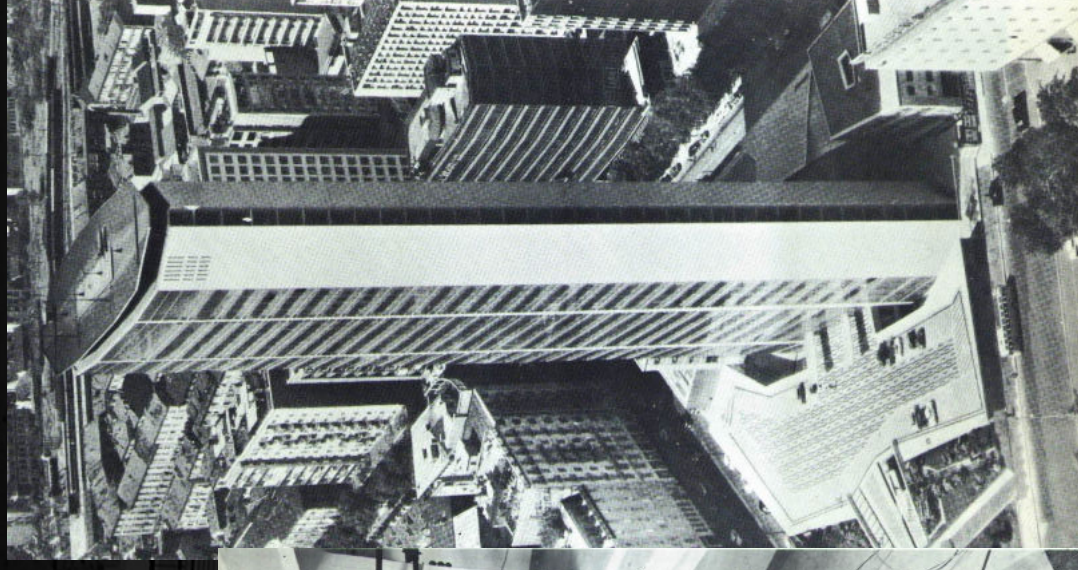
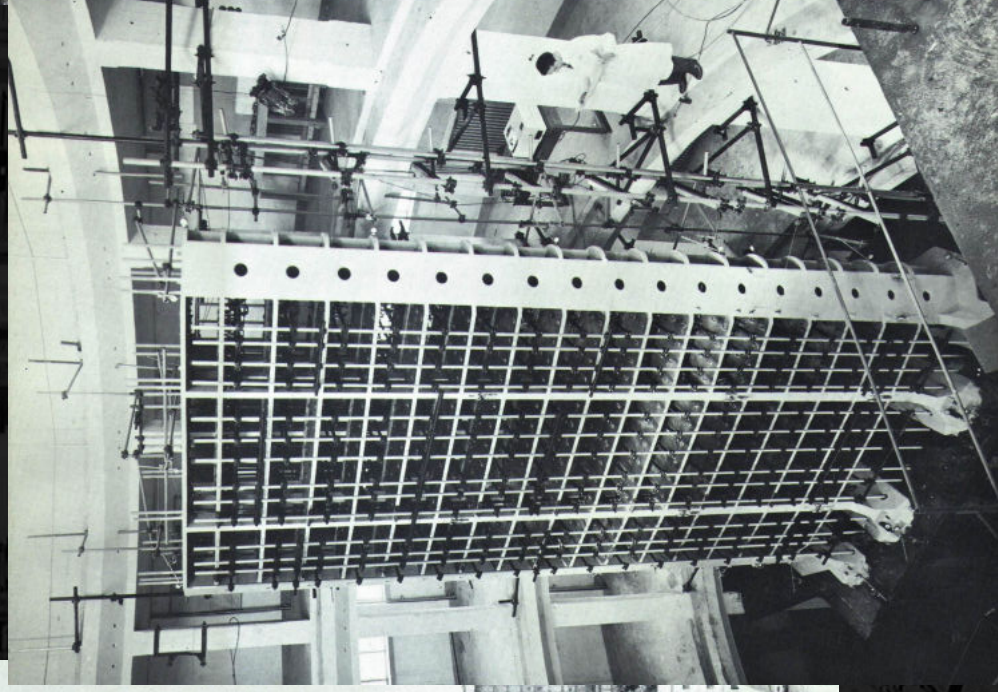
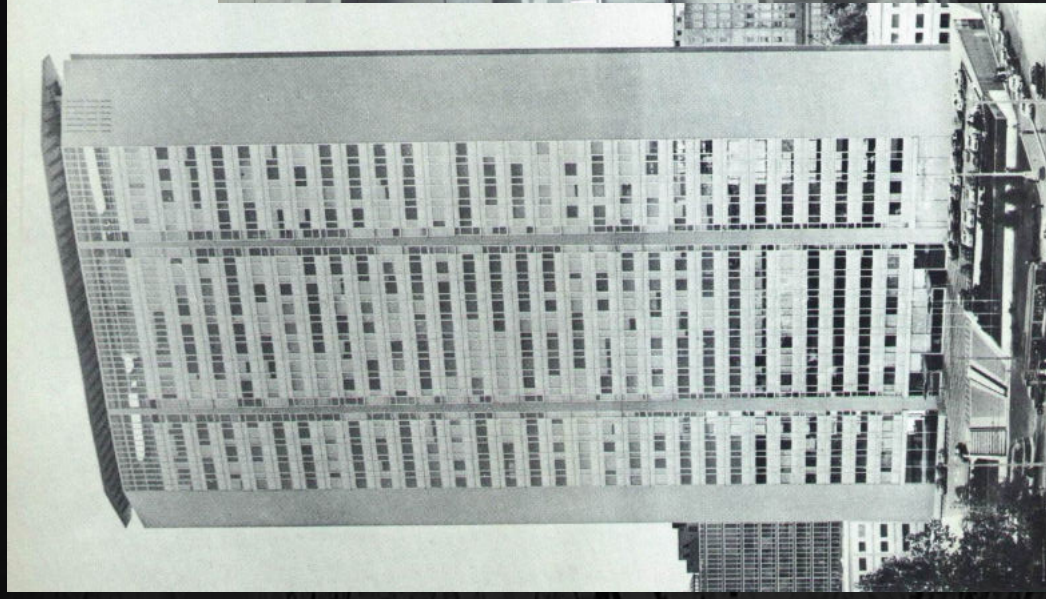
47. A középső szintek alaprajza



48. Az alsó szintek alaprajza



Pirelli Building (1958, 127m)



Moszkva



• Lomonosov Egyetem
(240m)



• Triumph Pallace
(261m)

Frankfurt

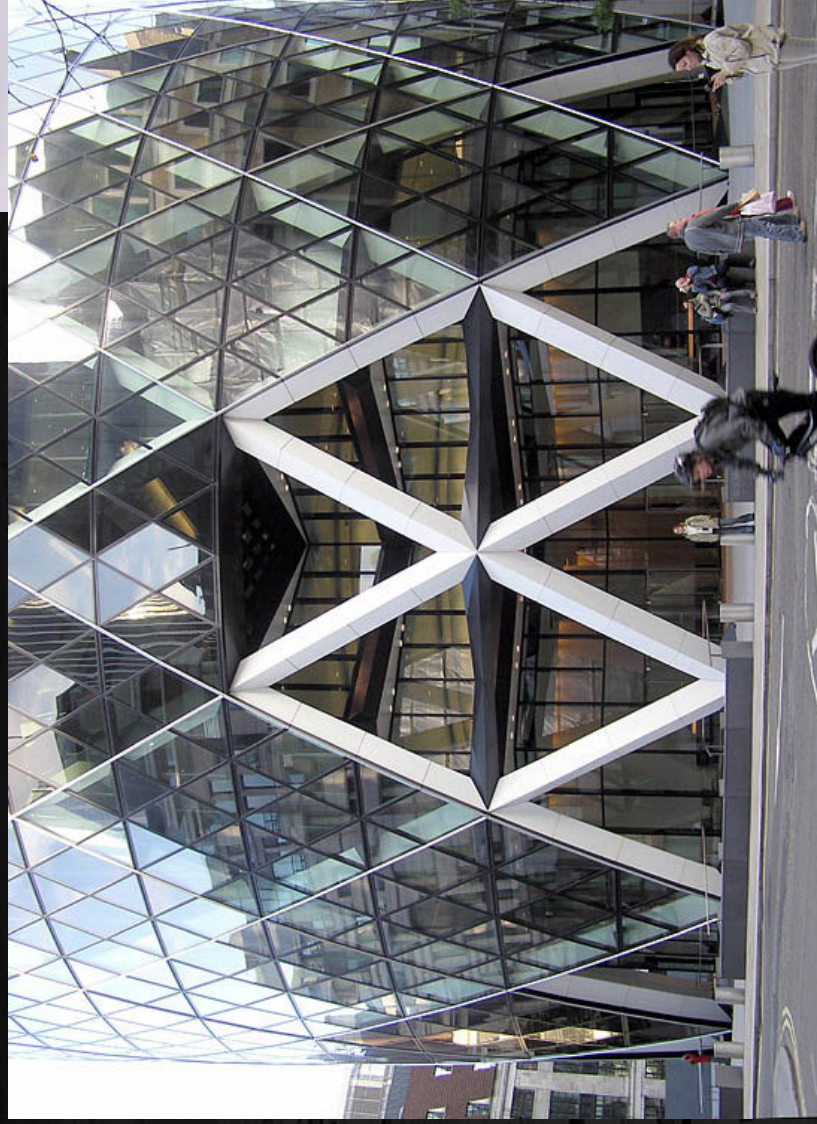


•Commerzbank
(1997, 259m)

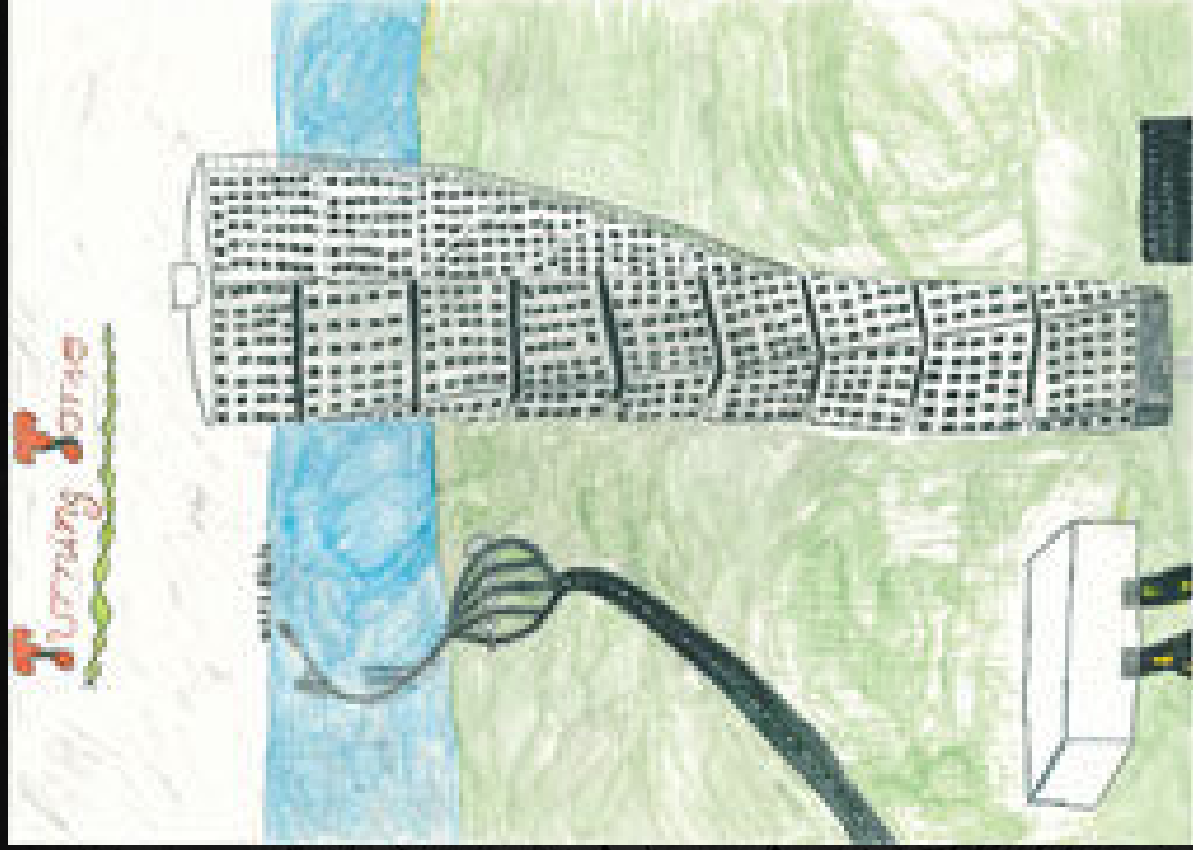


•Messeturm
(1990, 257m)

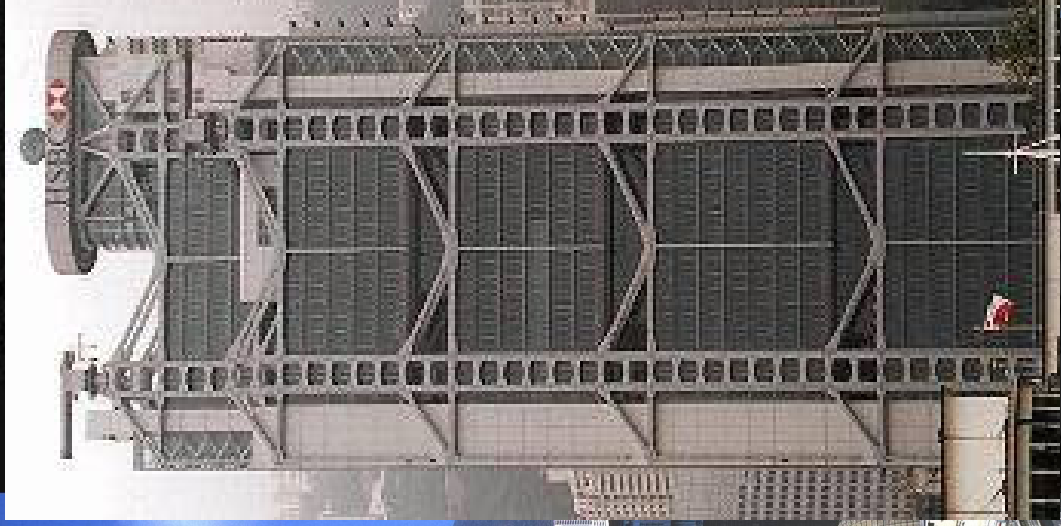
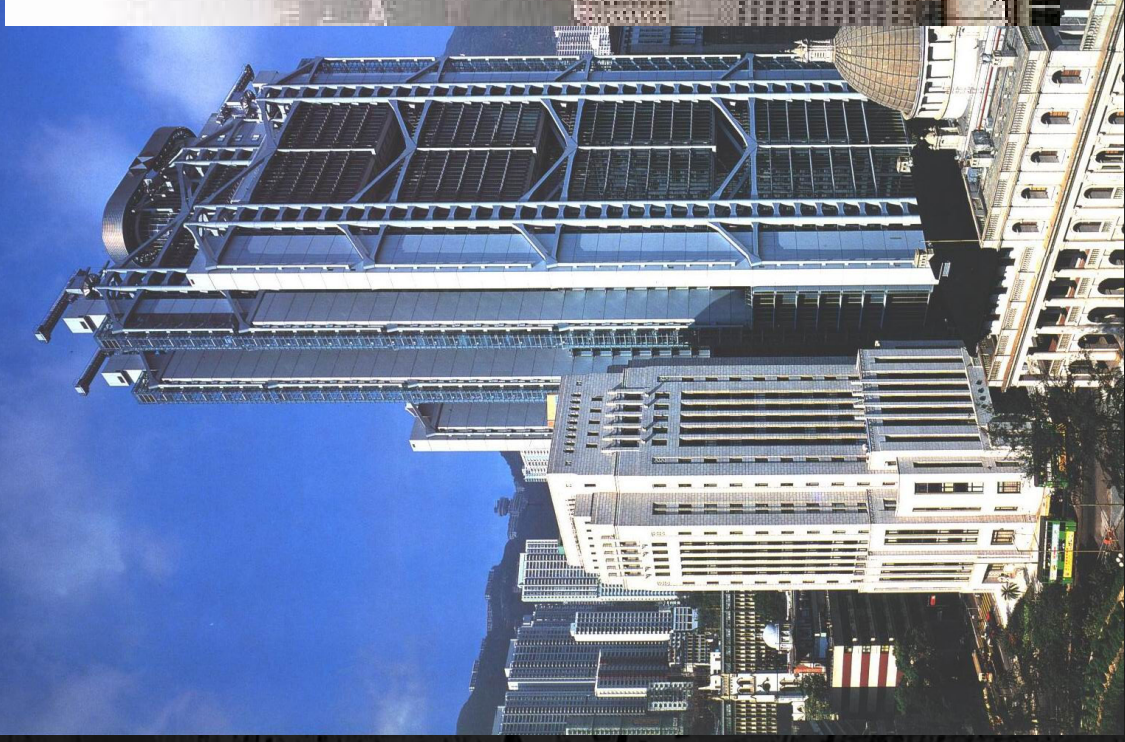
St. Mary Axe (2003, 180m)



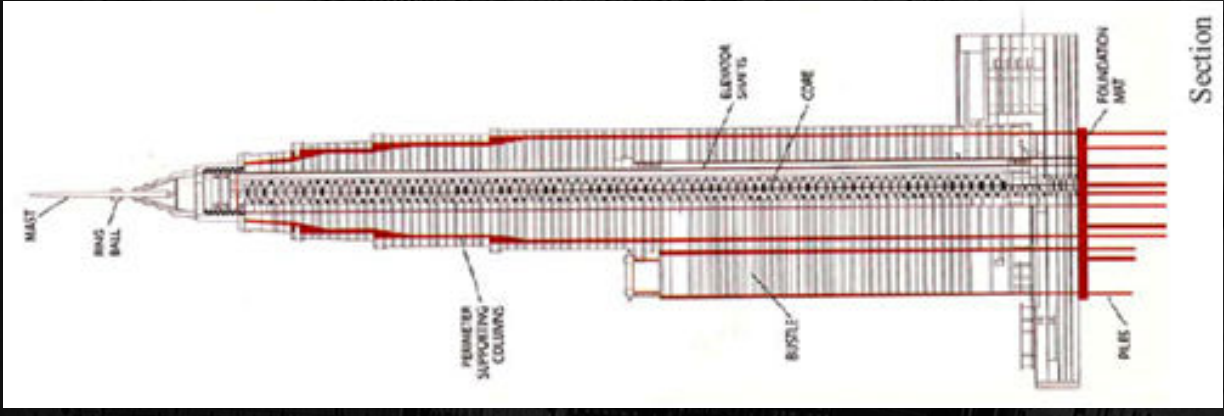
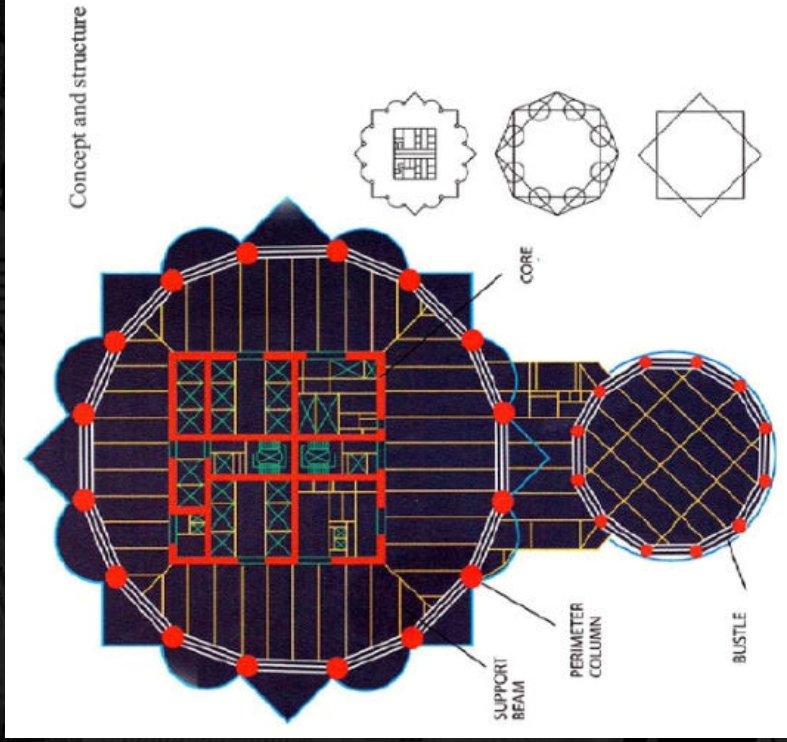
HSB Turning Torso (2005, 190m)



Hongkok Sanghaj Bank (1985, 179m)



Petronas ikertorony (1998, 452m)



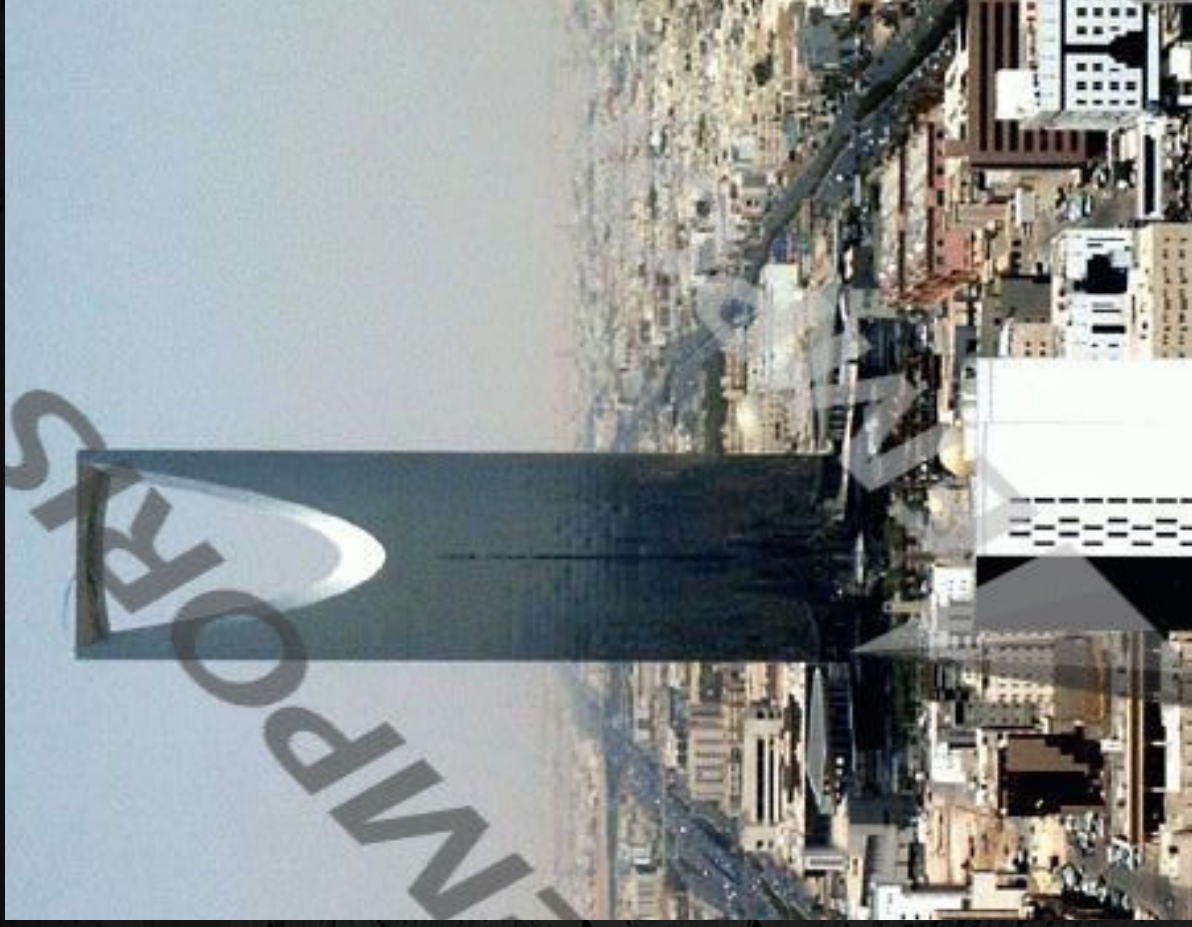
Bank of China (1990, 367m)



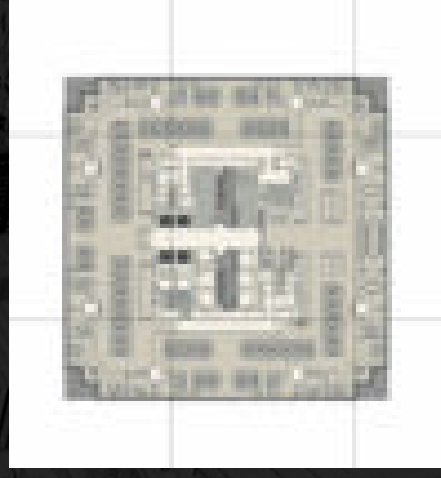
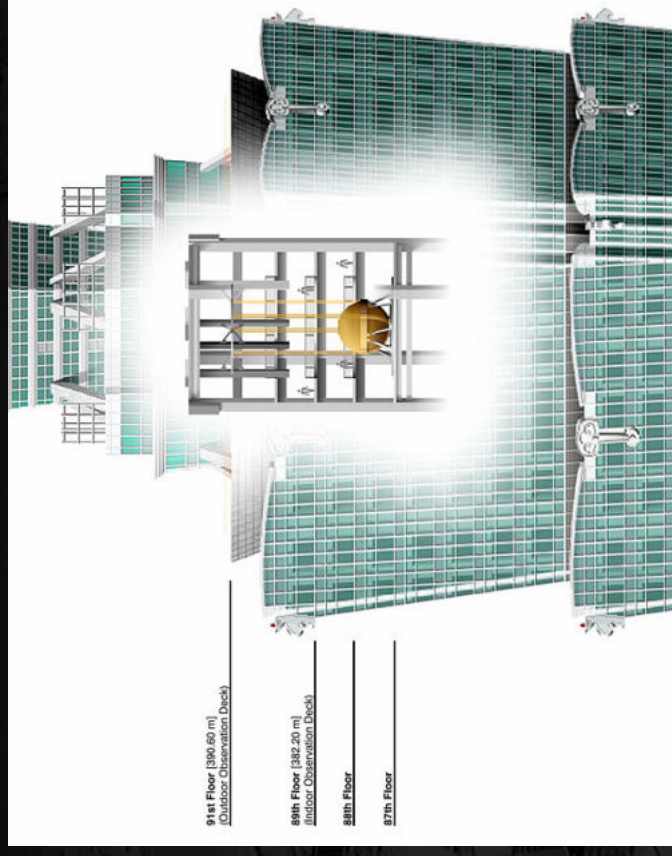
Burj al Arab (1999, 321m)



Kingdom Center (2002, 296m)



Taipei 101 (2004, 509m)



World Financial Center (2008, 492m)



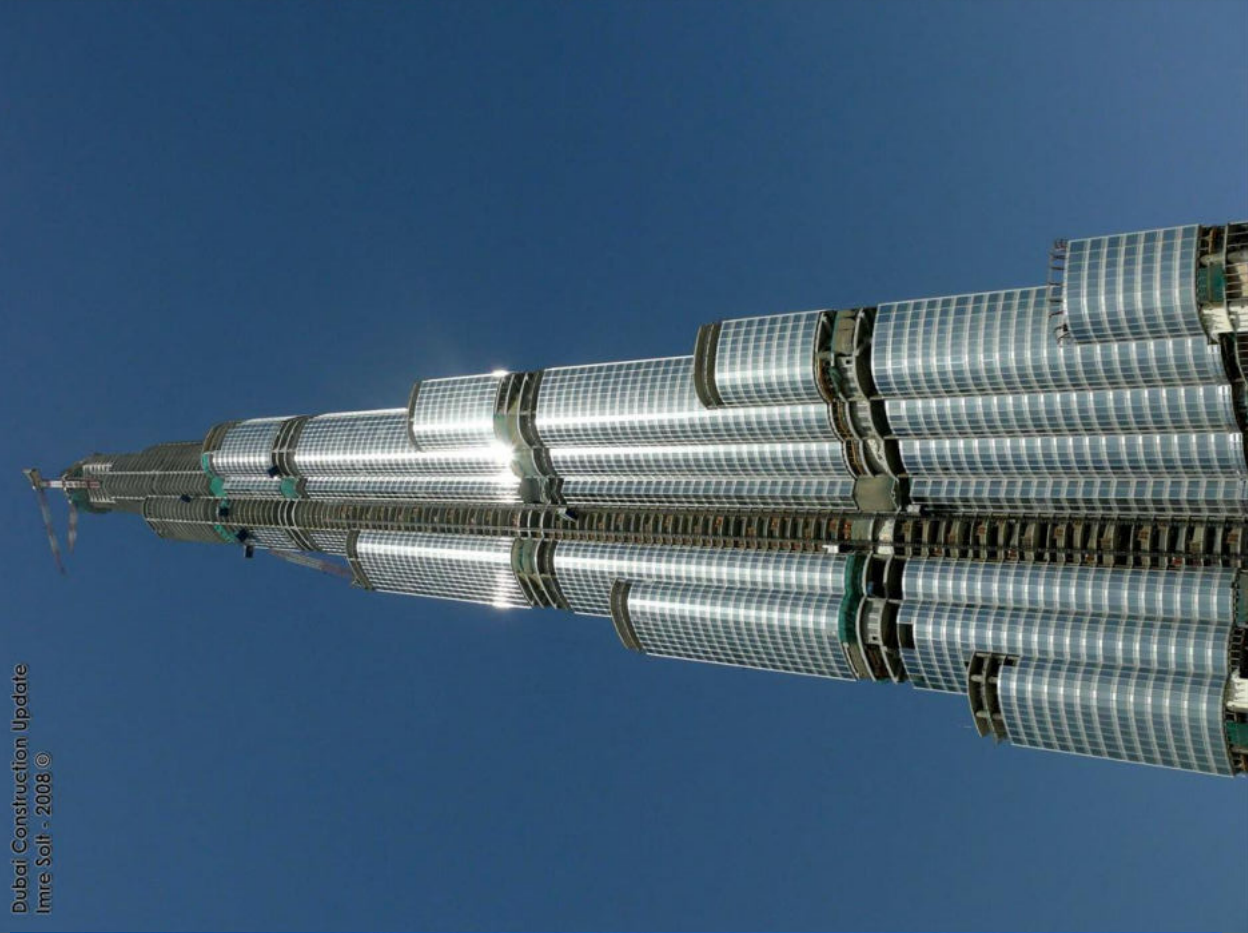
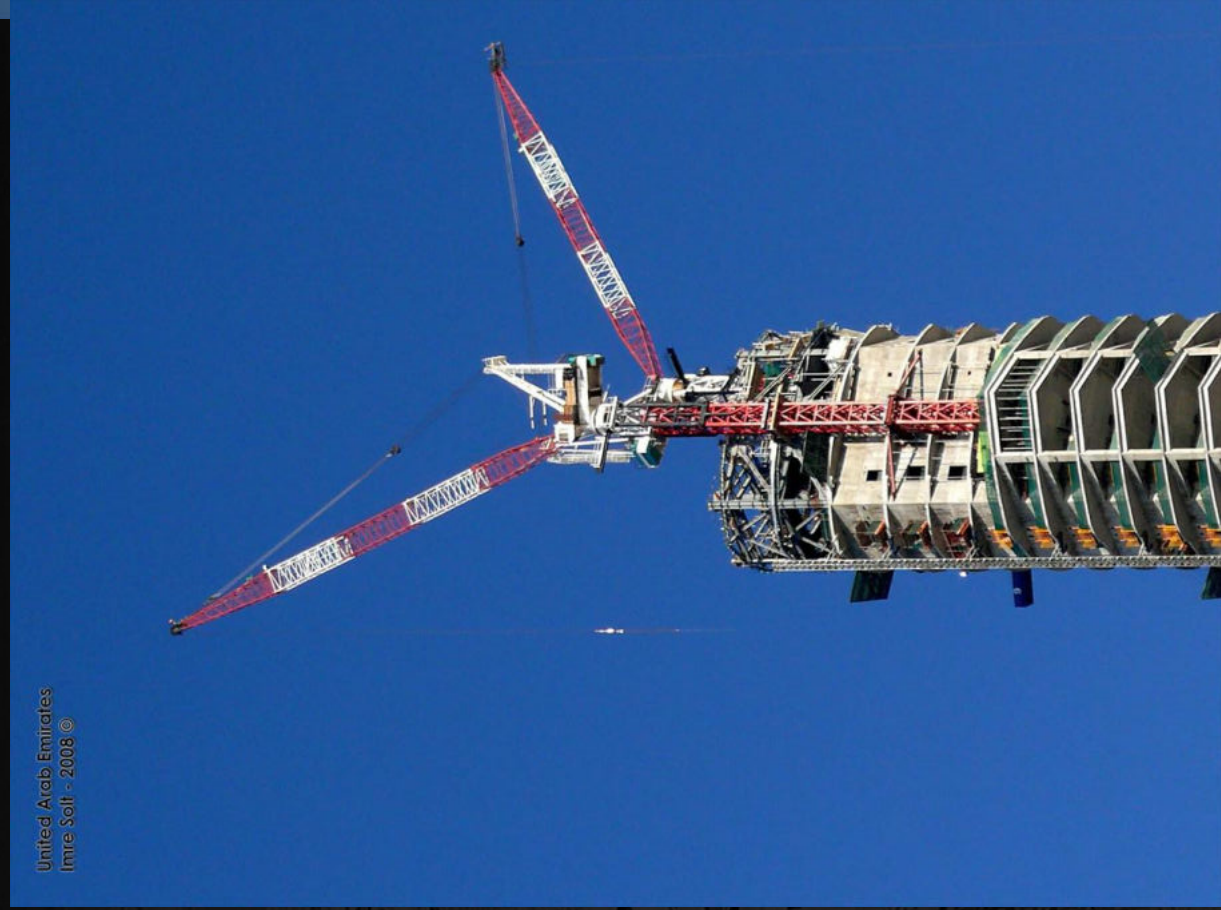
CCTV Headquarters (2008, 234m)



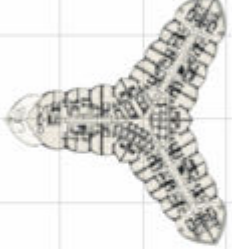
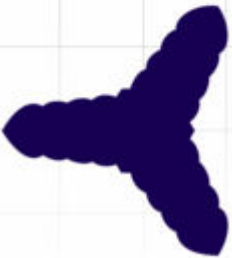
Burj Dubaj (2009, 818m)

United Arab Emirates
Imre Solt - 2008 ©

Dubai Construction Update
Imre Solt - 2008 ©



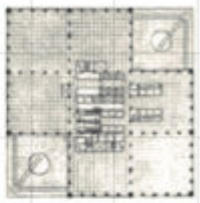
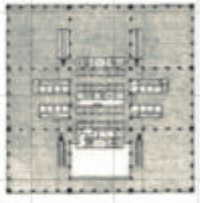
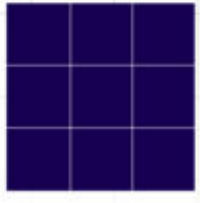
BURJ
DUBAI



TAIPEI
101



SEARS
TOWER



WTC
TOWERS

